

# THUNDER

## Economical Laser Detectors

**THUNDER®** detectors are designed to satisfy the construction professional, but priced for the handyman's budget.



**Exterior Model 54** - Includes Rod Clamp

**Interior Model 56** - Includes Top Magnet & Lanyard

THUNDER Models are available in six colors.

- **One Button Operation** - Easy to use. Simplicity makes it the perfect entry level detector.
- **High Performance** - Consistent accuracy over long ranges & extended battery life.
- **Built for Abuse** - Shock resistant. Waterproof and dust proof to IP67.
- **Compact Design** - Fits in your hand, on your tool belt, or your pocket.
- **2 -Year Warranty**

Increase the Productivity of Your Laser with an Apache Detector!

SPECIFICATIONS				
	STORM Laserometer	LIGHTNING 2	THUNDER 54	THUNDER 56
Reception Range: (Laser Dependent)	1500 ft. 450 m	1250 ft. 380 m	500 ft. 150 m	250 ft. 75 m
Reception Height	5 in 127.0 mm	2 in 50.0 mm	1.5 in 38.0 mm	1.5 in 38.0 mm
Accuracy:				
Ultra Fine	1/32 in 1.0 mm			
Super Fine	1/16 in 2.0 mm			
Fine	1/8 in 3.0 mm	1/16 in 2.0 mm		1/16 in 2.0 mm
Medium	1/4 in 6.0 mm	1/8 in 3.0 mm	1/8 in 3.0 mm	
Coarse	1/2 in 12.0 mm	1/4 in 6.0 mm		
Display Channels:	21	11	3	3
Warranty:	3 Years	2 Years	2 Years	2 Years
Battery Life: (alkaline):	70+ hours	60+ hours	100+ hours	70+ hours
Environmental:	All Waterproof, Dustproof to IP67			

\*Specifications subject to change without notice

All Apache detectors are totally waterproof and dustproof. Dunk them, scrub them, hose them off. They can take it!



Apache detectors work with all infrared and red beam rotating lasers. Use everywhere you currently use your laser.

## Over 500,000 Laser Detection Units Sold

Apache Technologies, Inc. is the world's largest manufacturer of laser detectors for construction and agriculture. This position of leadership was earned by developing leading edge, proprietary and patented laser detection technologies.

These technologies are employed in all of Apache's handheld detectors.

For more information please visit  
[www.apache-laser.com](http://www.apache-laser.com)  
or call toll free 1-888-272-2433



The Laser Detection Experts



The Most  
Accurate  
And  
Toughest  
Laser  
Detectors  
You Can  
Own





# STORM Laserometer

## The Revolution in Laser Detection

Increase your productivity with faster grade checks. The **Laserometer®** eliminates the guess work of checking grade with instant and accurate information. You'll save time, money, and materials.



Available in:

- Red
- Yellow
- Orange
- Blue



- **Digital Read Out** - Not only will you be able to tell if you are high, low, or on-grade, you will be able to tell by EXACTLY HOW MUCH! You do not have to reposition the clamp to find a small change in elevation.
- **Full Length Reception Height** - Huge 5 inch (127 mm) reception height acquires the beam quickly.
- **SuperCell Technology** - Uses durable proprietary blended acrylic components rather than fragile soldered components of traditional methods.
- **Remote CAPTURE Function** - Remotely acquires and retains a measurement. Useful for taking remote readings when the display cannot be seen.
- **Patented Two Position Rod Clamp Location** - Offset position utilizes majority of reception area for excavations or driving down to grade.
- **Super-Bright LED's** - Diodes give quick grade information. Green - on grade; Red - high or low.
- **21 Position Arrow Display** - Provides instant visual grade information. Can be scaled to the accuracy setting for quick graphical references.
- **Protective Over Molding** - Provides protection from drops and typical abuse. This design feature allows the STORM to survive a 10 foot (3 m) drop onto concrete. Visit [www.laserometer.com](http://www.laserometer.com) for details.
- **Strobe Light Rejection Filter** - Eliminates false readings from job site strobe lights.
- **3 -Year "No Excuses" Warranty** - If it fails for any reason, you are covered.

# LIGHTNING 2

## The Benchmark of Laser Detection Performance

Patented detection technology and field proven performance have made the **LIGHTNING®** detector the contractor's #1 choice.



Available in:

- Red
- Yellow
- Orange

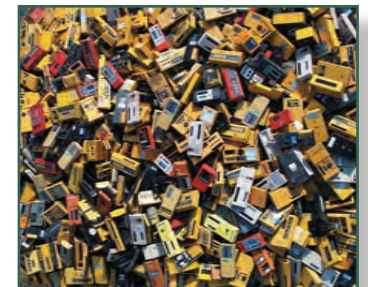


- **Bright, Multi-Color LED's** - Provide a visual indication of grade reference. Easy to see over long distances. Red - above grade, Green - on grade, and Blue - below grade.
- **11 Position Arrow Display** - Provides instant visual grade information.
- **LCD On Front and Back** - Large graphical display is easy to read.
- **Strobe Light Rejection Filter** - Eliminates false readings from job site strobe lights.
- **Slide On Clamp** - Detector quickly slides on and off.
- **2 -Year "No Excuses" Warranty** - If it fails for any reason, you are covered.

## The Best Clamps

The STORM and LIGHTNING 2 clamps have patented reversible jaws that grip firmly to round, oval, or square rods. They will not break when overtightened.

Clamps are covered under the same warranty as the detectors.



Ask about our Trade-In Program for STORM and LIGHTNING 2 detectors.