

GPS-Photo Link

software that maps your photos



GeoSpatial Experts introduced GPS -Photo Link as the first photo-mapping software in 2001. Known for its consistency and reliability over the past decade, GPS -Photo Link has emerged as the industry standard solution for mapping photographs. GPS -Photo Link is used in disaster response, engineering, oil & gas, infrastructure assessment, asset management, natural resource management, law enforcement and many other applications.

The software comes in two distinct Series: GIS Pro and Express.

GPS -Photo Link GIS Pro allows users to incorporate their photo mapping into a Geographic Information System (GIS). The program is fully accessible from an ArcGIS extension and can output ERSI ArcSDE Enterprise Geodatabases, Personal Geodatabases, File Geodatabases and shapfiles. Blue Marble data conversion in the GIS Pro series supports the use of different datum and projections.

GPS -Photo Link: Express Series allows business and recreational users to create digital maps in Google Earth and create reports in word, html, and .pdf formats. The powerful software is perfect for people who need to map their photos but do not use a GIS.



www.geospatialexperts.com

p | 303.255.2908 e | info@geospatialexperts.com

f | 303.362.7129



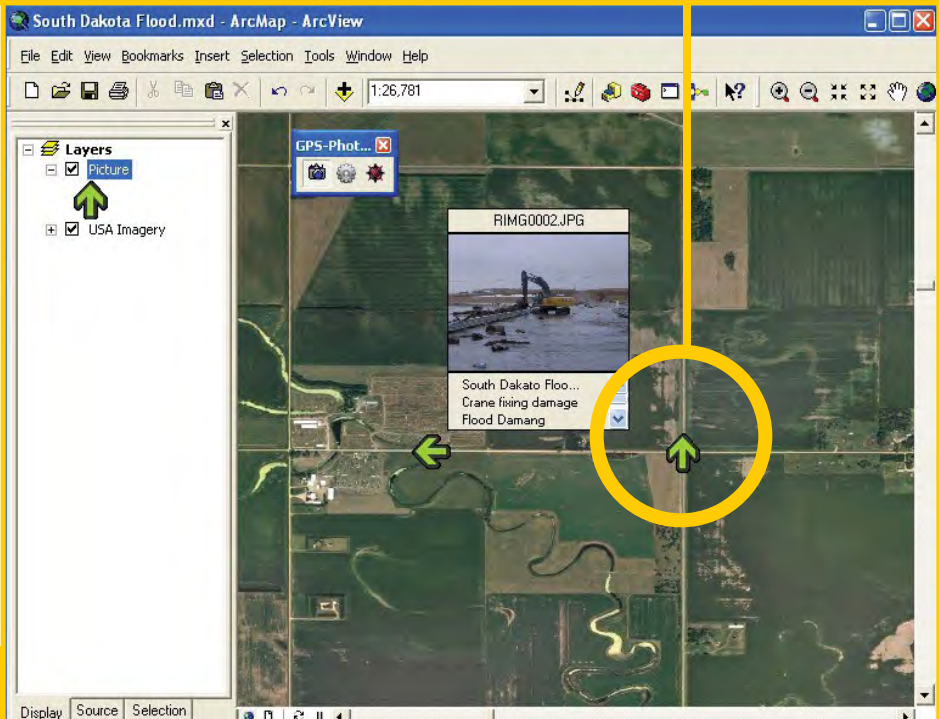
Camera/GPS Requirements:

GPS -Photo Link works with many camera/GPS units

- Integrated GPS & Camera (i.e. Ricoh 500SE, Nikon D5000 with attached GP-1 GPS, Trimble Juno).
- Cell phones with GPS. Cell phones with GPS must have GPS data embedded into their .jpg images (i.e. iPhone).
- Separate digital camera and GPS devices (i.e. Garmin GPS and any digital camera). GPS -Photo link connects photos to GPS coordinates using timestamp in each.

Software Requirements:

- Windows XP service pack 2 or higher



functionality

The new GPS-Photo link 5.0 offers a more interactive user interface with expanded functionality including:

- live map preview for photo location editing
- robust project management
- a full-featured ArcGIS extension for the GIS Pro Series software
- enhanced watermarking capabilities allowing the user to imprint any piece of attribute data on the photos
- exif header editing
- batch editing of photos and attribute data
- Blue Marble data conversion
- Crystal Reports allowing more sophisticated report generation

The new software will output:

- ERSI ArcSDE Enterprise Geodatabases, Personal and File Geodatabases, and Shape Files.
- Google Earth files and .gpx files
- Access and csv files to show attribute information as a database or table
- Enhanced reports in word, html, and .pdf